



MOBILE FIELD HOSPITALS

RÖDER
EMIRATES STRUCTURES

TEMPORARY MEDICAL BUILDINGS COMPLEX IN MOSCOW

The complex of hospital buildings, Moscow, Kommunarka



Purpose: construction of additional hospital buildings during the COVID-19 pandemic
Buildings type: RÖDER H-Line series
Dimensions: 20x60 m – 19 pcs., 20x40 m – 2 pcs.
Number of beds: 1368
Installation time: about 1,5 month



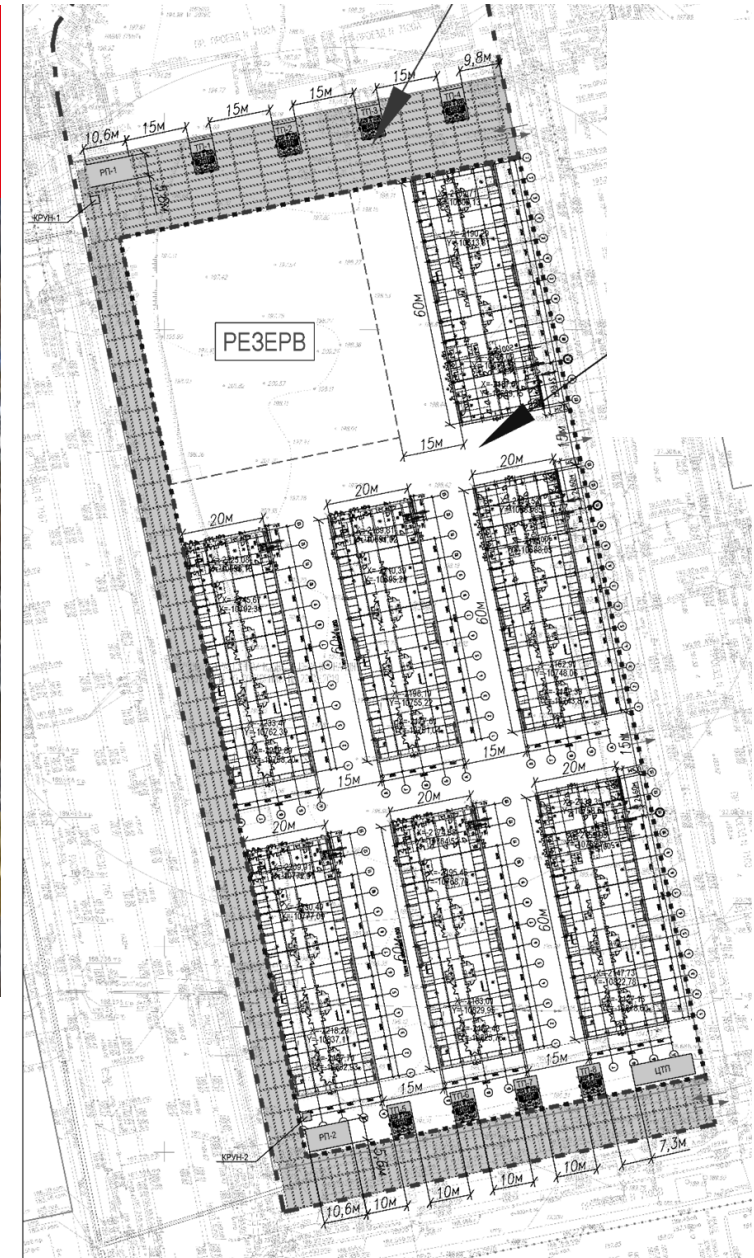
PLOT AND CONSTRUCTION PLAN

Kommunarka, near the Multidisciplinary Medical Center "Novomoskovsky"



The 1st stage of construction. Photo was taken on April 20, 2020.

Connection to the electricity and heat supply, water supply, and sanitation networks is planned. The complex will be launched using electric heating, followed by connection to an existing boiler plant.



CHARACTERISTICS OF FACILITIES

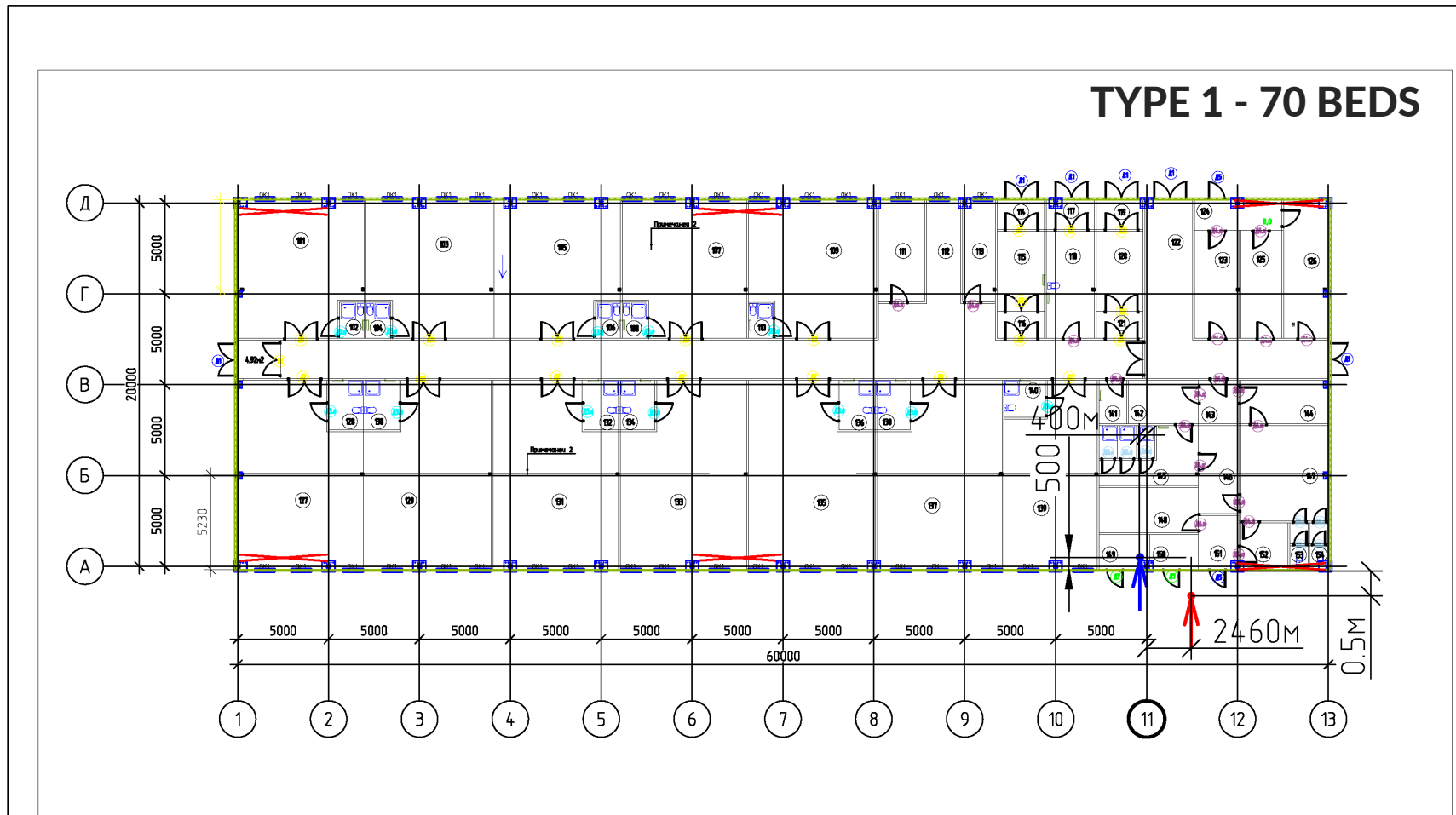



The 1st stage of construction. Photos were taken on April 23, 2020.

Roder installs reliable pre-fabricated medical buildings for patients with coronavirus infection located on the territory of City Clinical Hospital No 40 in Kommunarka, Moscow. This Roder's constructions will have everything necessary the patient and doctors need: special locks and sanitary rooms, restrooms and changing areas, as well as comfortable rooms for patients, equipped with showers and air disinfection devices.

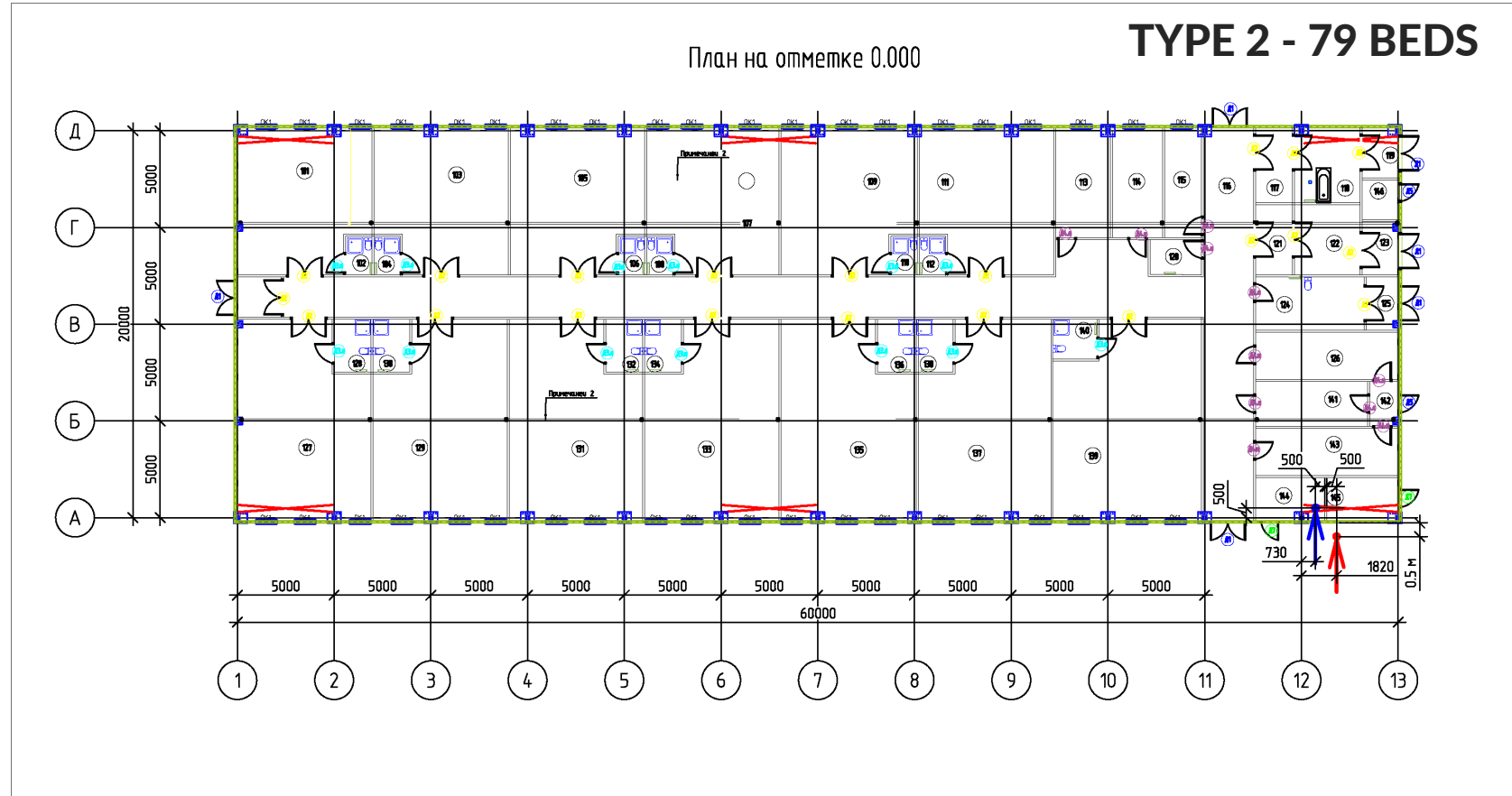


FRAME AND AWNING DESIGNS 20X60 WITH PASSAGE AND SANITARY PASS



						10_1-AP-04.2020			
						Легковозводимая каркасно-ментовая конструкция, размером 20х60м, для установки на территории больницы по адресу: ул. Сосенский Стан, д. 8, с.3			
Изм.	Кол. уч.	Лист	№ док.	Подп.	Дата	Временно возводимое ментовое сооружение	Стадия	Лист	Листов
Разработал	Тимур				04.2020		Р	70	
Проверил					04.2020				
						план			
Н.контр.									

FRAME AND AWNING DESIGNS 20X60 WITH PASSAGE



						10_1-AP-04.2020			
						Легковозводимая каркасно-тентовая конструкция, размером 20x60м, для установки на территории больницы по адресу: ул. Сосенский Стан, д. 8, с3			
Изм.	Кол. уч.	Лист	№ док.	Подп.	Дата	Временно возводимое тентовое сооружение	Стадия	Лист	Листов
Разработал	Т	И	М		04.2020		Р	79	
Проверил					04.2020				
						план			
И.контр.					04.2020				

TEMPORARY MEDICAL BUILDINGS AT CCH NO. 40



“The proximity allows us to discuss patients and maintain the sequence of their treatment. At the same time, it will be possible to release quickly beds that are equipped with oxygen, ventilators, and monitoring. After all, if the patient has been stabilized and oxygen support is no longer needed, but doctors still need to monitor patient’s condition, then we will be able to transfer them to new rooms.”



786

units of construction equipment



2506

builders

Denis Protsenko, Chief Medical Officer of State Clinical Hospital No. 40 in Kommunarka

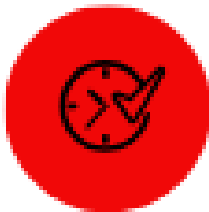
TERMS OF CONSTRUCTION OF ALL STRUCTURES



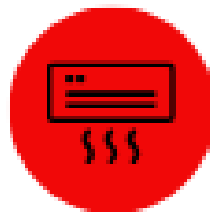
TERMS OF CONSTRUCTION OF ALL STRUCTURES



TEMPORARY MEDICAL BUILDINGS IN KOMMUNARKA



Assembly
time: 17 days
for the 1st
phase



Full range of
engineering
equipment

“This is a fairly serious equipment, a serious building and premises, provided with all necessary furniture, equipment, and so on. Here at these sites will be deployed for 500 patients on 1st phase. Kommunarka, itself, according to the planned assistance, also has 500 beds. In fact, this is another Kommunarka hospital. It will be built. We started on 20th and will be plan soon to put on load for patients“

Moscow Mayor Sergei Sobyenin

CONSTRUCTION TECHNOLOGY



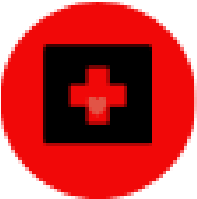
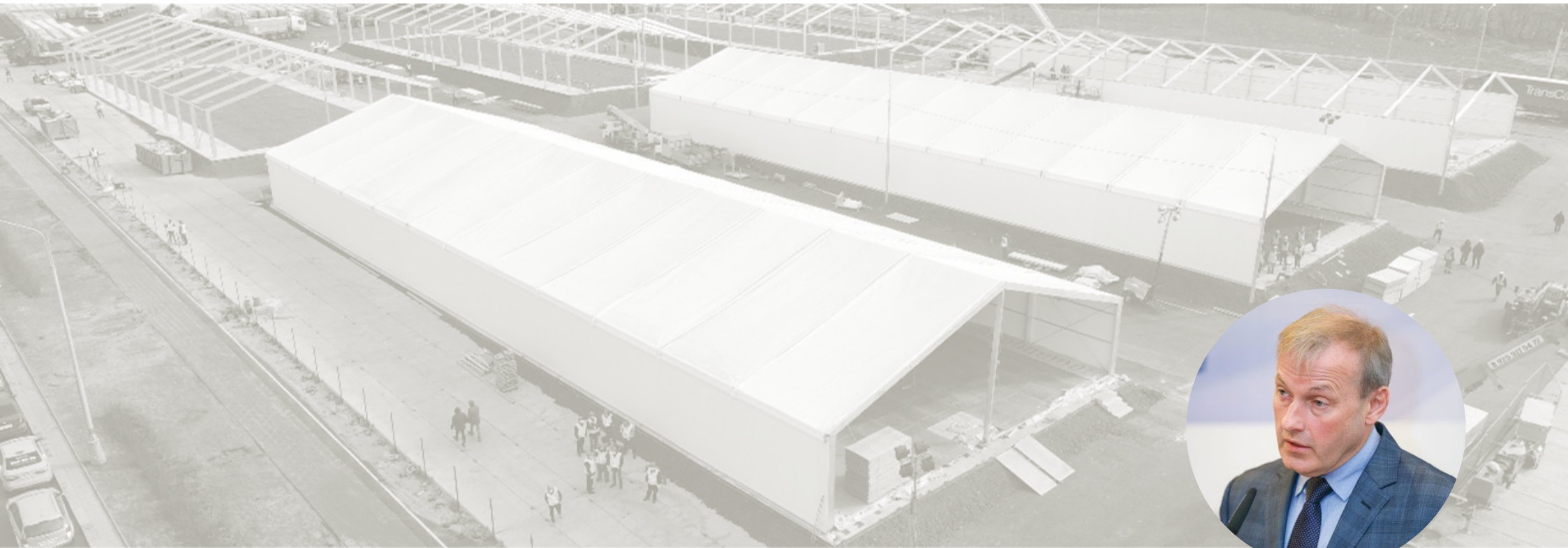
Construction at the site is carried out on a 24/7 schedule, with simultaneous installation of all seven buildings at 1st stage of constructions works.

Base preparation, frame lifting, installation of wall sandwich panels, installation of thermal roofs, interior decoration, laying of utility networks - about 2500 people are employed at the construction site.

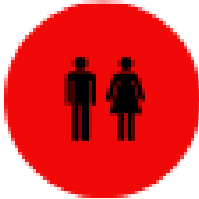
On April 23 2020, construction site in Kommunarka was visited by Moscow Mayor Sergei Sobyenin.



TEMPORARY MEDICAL BUILDINGS AT CCH NO. 40



21 temporary hospital buildings 20x60 m and 20x40 m



1368 beds

“We use prefabricated aluminum structures, the modularity method allows us to individually adapt the dimensions. Here we install temporary high-tech buildings 20x60 and 20x40 meters. Equipping our structures with thermal roofs and sandwich facades provides adequate protection in all weather conditions.”

Roder LLC CEO Aleksey Laukart

READY-TO-USE HOSPITAL BUILDINGS

Hospital Research Institute of Ambulance
named after N.V. Sklifosovsky, Moscow



17 points of construction works
in Moscow



READY-TO-USE HOSPITAL BUILDINGS

City Clinical Hospital No. 15 named after O.M. Filatov, Moscow



ALL engineering networks and systems



READY TO USE HOSPITAL BUILDINGS



SAFE

areas for patients
and doctors



ADDITIONAL HOSPITAL BUILDINGS

STORAGE



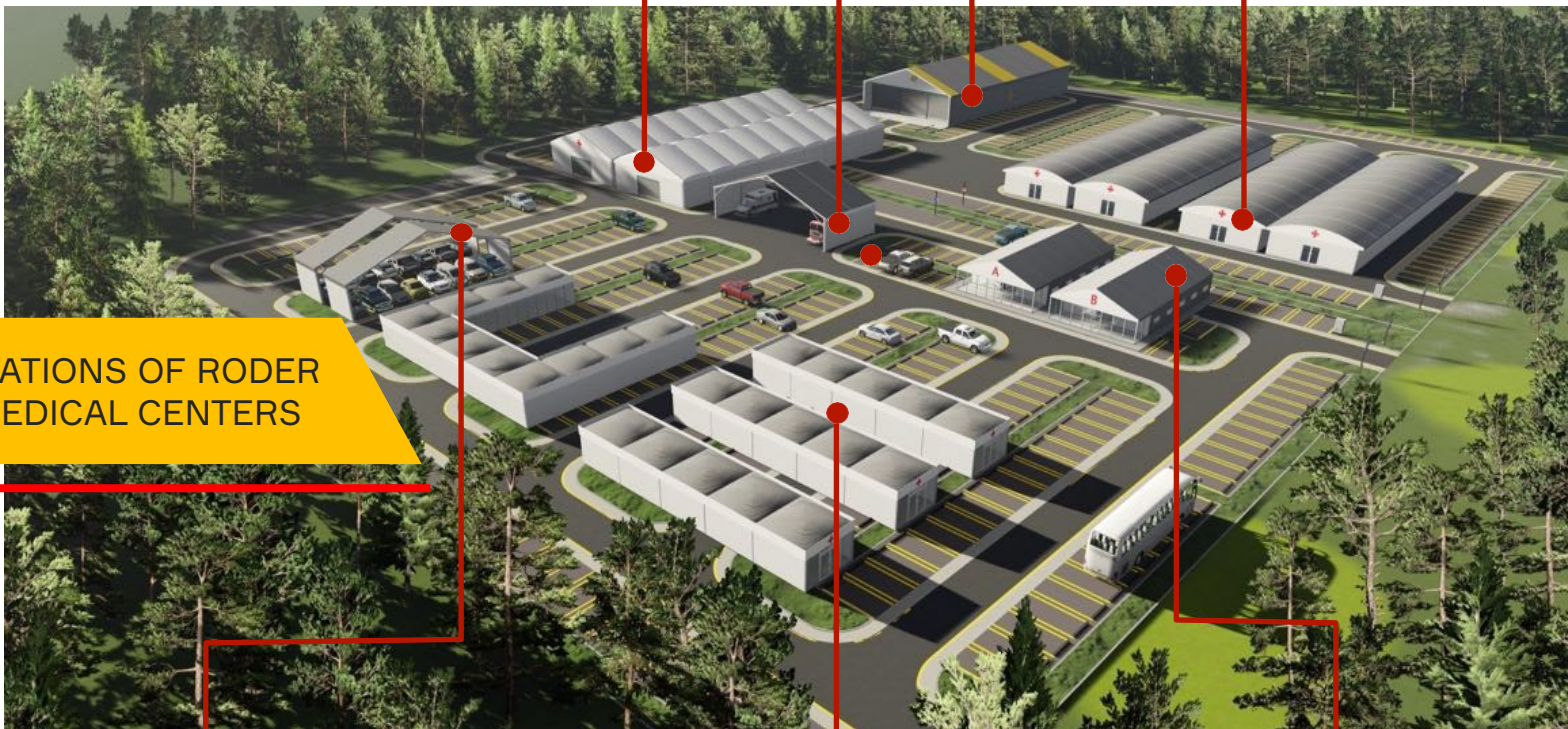
DRIVE-THROUGH & CANOPIES



WASTE MANAGEMENT



SHELTERS



POSSIBLE APPLICATIONS OF RODER BUILDINGS FOR MEDICAL CENTERS

PARKING CANOPIES



MODULAR MEDICAL FACILITIES



FIELD HOSPITALS



ADDITIONAL HOSPITAL BUILDINGS

The space capacities of hospitals can reach their limits extremely quickly due to the corona pandemic.

RODER offers turnkey and flexible system buildings to create high-quality areas for accommodating and treating patients at short notice.

The modular system design accelerates both production and construction and has already proven its worth in the refugee crisis of 2015/2016.



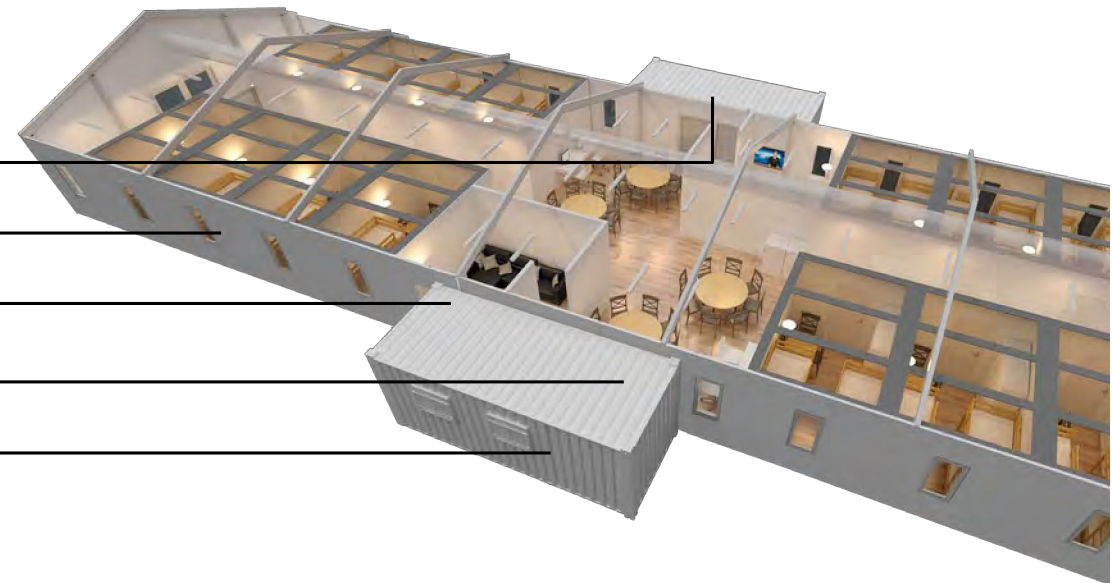
Shower container

Insulated walls

Thermal roof

Heating system

WC container



- Operating temperatures from - 50 C to +70 C
- Factory readiness - mounted as soon as possible
- Cost effective - energy saving - over 70%

TURNKEY SOLUTION FROM ONE SUPPLIER

BIGGEST RENT PARK OF CONSTRUCTIONS AND EQUIPMENT IN RUSSIA

WHY RODER?

RODER design, manufacture, transport, install and support customized solutions for emergency assistance. All our designs comply with the highest international safety standards.

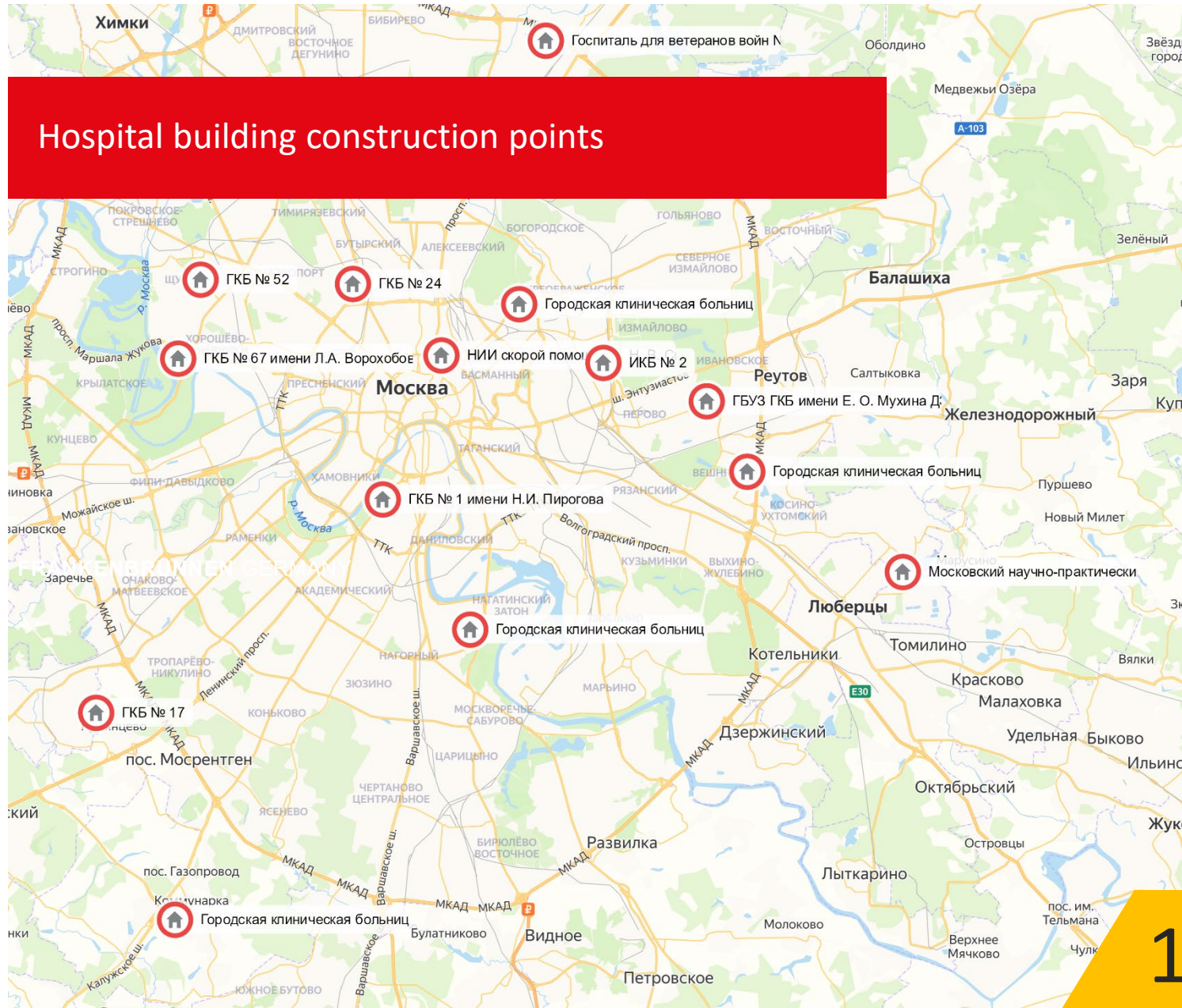
Easy transportation, assembly, and scalability to suit your needs. Reducing investment risks, as the project launch period and the number of construction costs is significantly reduced. Buildings are resistant to wind, snow, and temperature loads. The reliability of the design developed in Germany allows the use of RODER modular structures for a long time.

Each project matters for us, we provide a full cycle of work with a team of professional designers, civil engineers, project managers, logisticians, specialists in related disciplines, and with more than 60 years of experience in modular construction around the world.



MAP CONSTRUCTIONS PROJECTS IN MOSCOW 2020-2022

Hospital building construction points



- Research Institute of Ambulance named after N.V. Sklifosovsky
- State Clinical Hospital No. 1 named after N.I. Pirogov
- State Clinical Hospital No. 24
- City Clinical Hospital No. 15 named after O.M. Filatova
- City Clinical Hospital named after S.S. Yudina
- City Clinical Hospital № 52
- State Clinical Hospital No. 67 named after L.A. Vorokhobova
- ICH No. 2
- Hospital for War Veterans No. 3
- GBUZ State Clinical Hospital named after E.O. Mukhin DZM, branch number 1
- State Clinical Hospital No. 17
- Moscow Scientific and Practical Center for Medical Rehabilitation, Restorative and Sports Medicine, Moscow Department of Health, branch No. 3 City Clinical Hospital No. 40
- Bakhrushin Brothers City Clinical Hospital

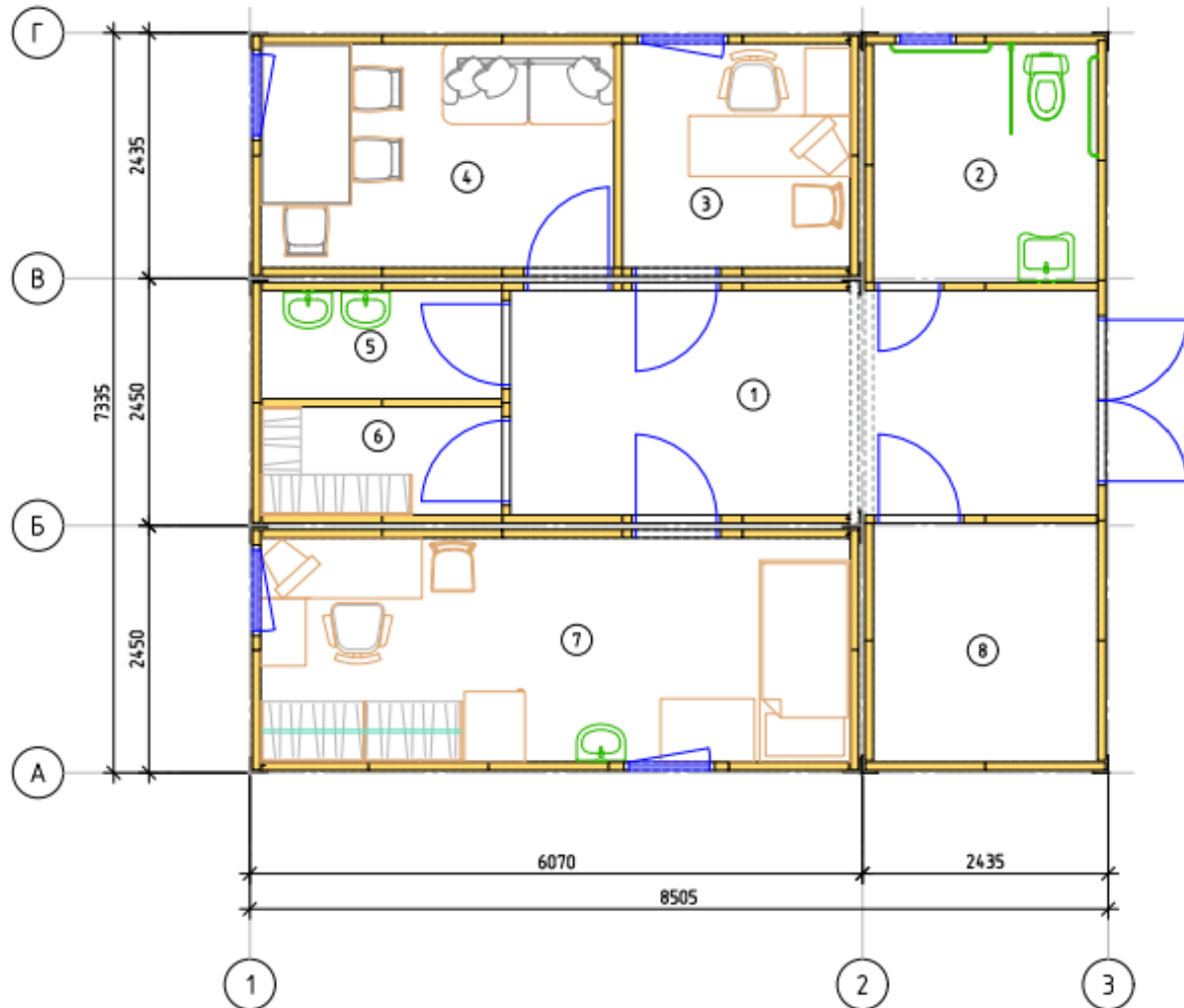
BLOCK MODULAR BUILDINGS CHARACTERISTICS



- Frame - cold rolled welded steel profile
- Flooring - galvanized sheet steel and 20 mm cement-bonded particleboard, covered with linoleum
- Roof - cold rolled steel bent profile, roofing - galvanized steel, double seam
- Walls and partition walls made of 80/100 mm ISO-panels in RAL 9003
- Electric convectors, air conditioning, mechanical ventilation
- External switchboards, socket outlets, switches, light fittings

Standart dimensions – 6055x2435x2591 mm

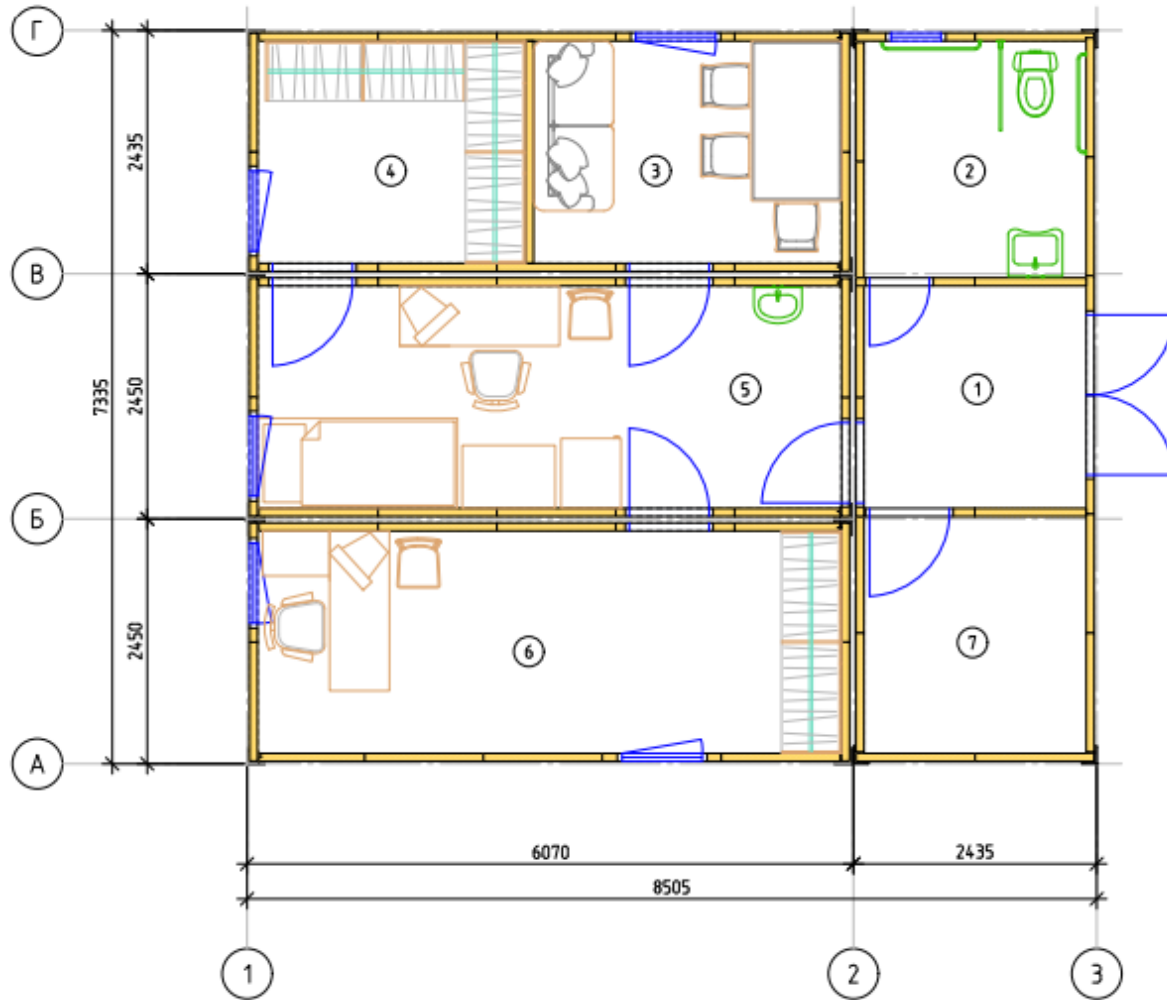
MODULAR MEDICAL STATION V1



EXPLICATION OF PREMISES

No.	Name	m2
1	Hallway	12.95
2	Bathroom	5.27
3	doctor's office	5.03
4	Staff lounge	7.80
5	Sterilization room	2.57
6	Storage room	2.57
7	Treatment room	13.01
8	Technical room	5.27
Total:		54.47

MODULAR MEDICAL STATION V2



EXPLICATION OF PREMISES

No.	Name	m2
1	Hallway	4.95
2	Bathroom	5.27
4	Staff lounge	6.86
6	Storage room	5.97
7	Treatment room	13.01
3	doctor's office	13.01
8	Technical room	5.27
Total:		54.47



Contact us

Project Sales Department
Mohd Vamiq Ansari

Mob +971-50-4701502
Email vamiq.ansari@roder.ae
Web www.roder.ae

Business Development department
Mr. Eldar Mamaev

Mob +971-52-3283355
Email eldar.mamaev@roder.ae Web
www.roder.ae